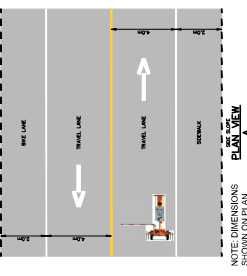
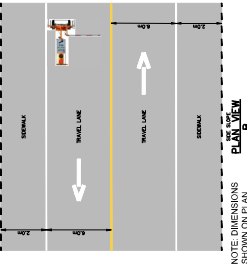
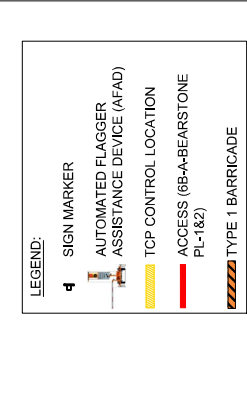


STORAGE NOT REQUIRED

Expected hours of work:
- Monday - Saturday, with the following exceptions:
- Overtime deliveries that must take place at night
- Narrow environmental / regulatory windows. A noise exemption permit will be required.
- Days with weather-related issues
- Days with site-related issues

Dynamic message sign (DMS) will be used for the work zone (i.e. between AFADs) will have Type 1 barricades. These barricades will be controlled and maintained by a spotter situated in the work zone with radio communication to the AFAD operators. Vehicles exiting driveways will do so with the assistance of the spotter in a safe manner.

Night work traffic control provisions:
A portable dynamic message sign (PDMS) is required for night work operations on paved roads. The message displayed on the PDMS will alert motorists to the work activities occurring ahead (e.g., flagger operation).

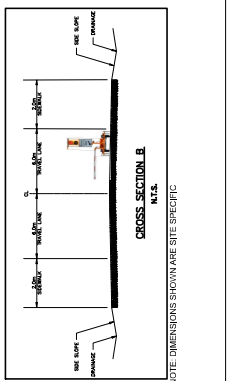
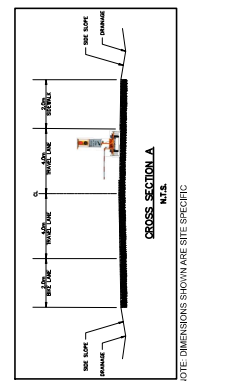


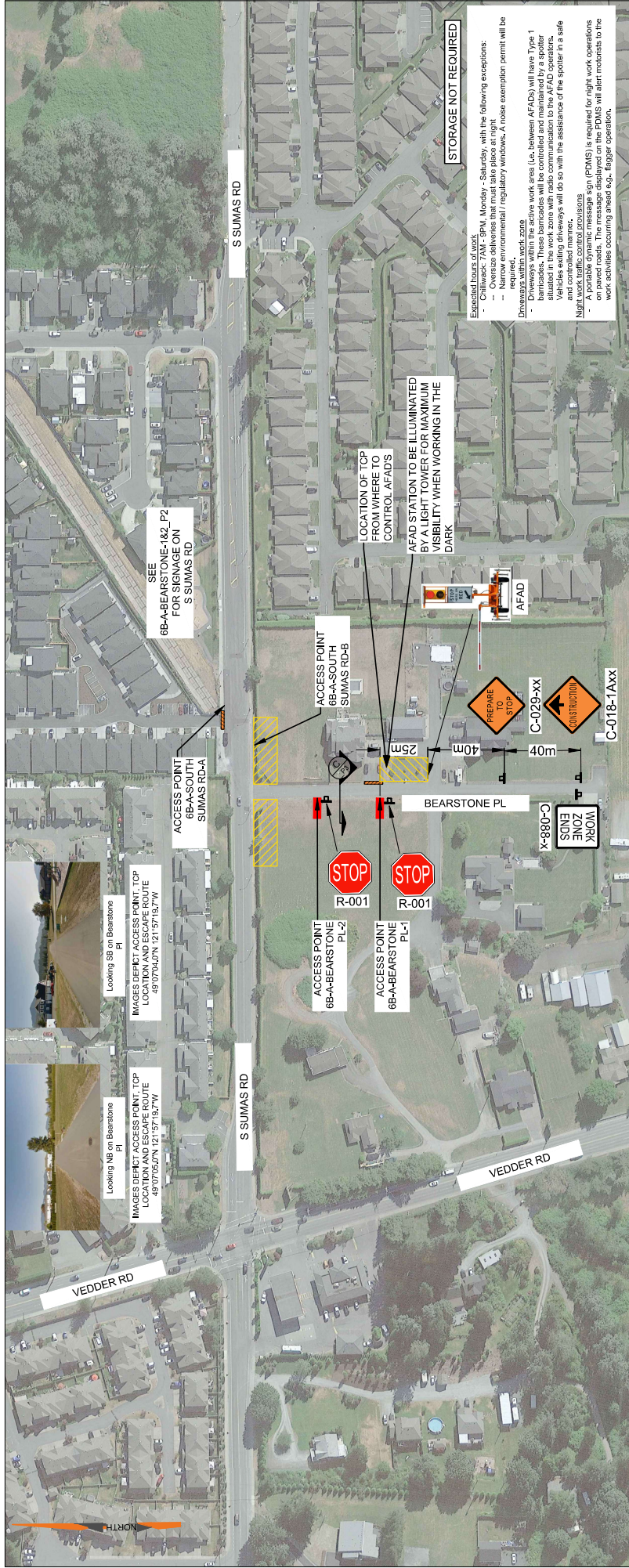
WATT CONSULTING GROUP
Consulting Group
Calgary, Edmonton, Lloydminster,
Okanagan, Vancouver, Victoria
WATTCONSULTINGGROUP.COM

DESIGNED: WATT CONSULTING GROUP LTD	CHECKED: WATT CONSULTING GROUP LTD	APPROVED: WATT CONSULTING GROUP LTD
DATE: FEB 02, 2023	SCALE: AS SHOWN	NOT TO SCALE

NO.	REVISIONS	DATE
0	ISSUED FOR IMPLEMENTATION	FEB 02-23
1	ISSUED FOR IMPLEMENTATION	FEB 06-23
2		
3		
4		
5		
6		
7		
8		

PERMIT TO PRACTICE
WATT CONSULTING GROUP LTD
SIGNATURE _____
DATE _____
PERMIT NUMBER: 1001432
ENGINEERS & GEOSCIENTISTS
BRITISH COLUMBIA





STORAGE NOT REQUIRED

Expected hours of work:

- Monday - Saturday, with the following exceptions:
- Oversize deliveries that must take place at night
- Narrow environmental / regulatory windows. A noise exemption permit will be required.

Days with no work:

- Days with no work
- Days with limited work

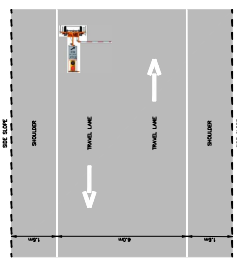
These barricades will be controlled and maintained by a spotter situated in the work zone with radio communication to the AFAD operators. Vehicles exiting driveways will do so with the assistance of the spotter in a safe manner.

Night work traffic control provisions:

- A portable dynamic message sign (PDMS) is required for night work operations on paved roads. The message displayed on the PDMS will alert motorists to the work activities occurring ahead (e.g., flagger operation).

LEGEND:

- SIGN MARKER
- AUTOMATED FLAGGER ASSISTANCE DEVICE (AFAD)
- TCP CONTROL LOCATION
- ACCESS (6B-A-BEARSTONE PL-1&2)
- TYPE 1 BARRICADE



NOTE: DIMENSIONS SHOWN ARE SITE SPECIFIC

PERMIT TO PRACTICE
WATT CONSULTING GROUP LTD

SIGNATURE _____
DATE _____

PERMIT NUMBER: 1001432
ENGINEERS & GEOSCIENTISTS
BRITISH COLUMBIA

PROJECT: 20230228-001-AP-6B-A-BEARSTONE-PL-1-&2
DATE: 2023-02-28 PM
DRAWN BY: [Name]
CHECKED BY: [Name]

SEAL: _____

ISSUED FOR IMPLEMENTATION: FEB 02-23
ISSUED FOR IMPLEMENTATION: FEB 06-23

DESIGNED: DRAWN: CHECKED: APPROVED: [Initials]
JY JY JY JY

DESIGN SPEED: 50 km/h
DESIGN VEHICLE: 50 km/h

PROJECT NO.: 3431.B01
DRAWING NO.: 6B-A-BEARSTONE-ABE_L_P3

DATE: FEB 02, 2023
REVISION: 1

TITLE: **TRAFFIC CONTROL LAYOUT**
AP-6B-A-BEARSTONE PL-1 & 2
BPLP TMEP SPREAD 6B

WATT Consulting Group
Calgary, Edmonton, Lloydminster,
Okanagan, Vancouver, Victoria
WATTCONSULTINGGROUP.COM



VEDDER RD

S SUMAS RD

BEARSTONE PL

ACCESS POINT 6B-A-BEARSTONE PL-1

ACCESS POINT 6B-A-BEARSTONE PL-2

ACCESS POINT 6B-A-SOUTH SUMAS RDA

ACCESS POINT 6B-A-SOUTH SUMAS RDA-B

ACCESS POINT 6B-A-SOUTH SUMAS RDA-C

7.5m

30m

50m

20m

STOP R-001

STOP R-001

WORK ZONE ENDS TO STOP C-088-X

PREPARE TO STOP C-029-XX

AFAD

SEE 6B-A-BEARSTONE-1&2 P2 FOR SIGNAGE ON S SUMAS RD

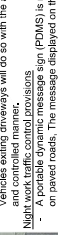
LOCATION OF TOP CONTROL AFAD'S

AFAD STATION TO BE ILLUMINATED BY A LIGHT TOWER FOR MAXIMUM VISIBILITY WHEN WORKING IN THE DARK

STORAGE NOT REQUIRED

Expected hours of work
 - Monday - Saturday, with the following exceptions:
 - Oversize deliveries that must take place at night
 - Narrow environmental / regulatory windows. A noise exemption permit will be required.
 - Days with adverse weather conditions
 - Days with other work activities in the work area (i.e. between AFADs) will have Type 1 barricades. These barricades will be controlled and maintained by a spotter situated in the work zone with radio communication to the AFAD operators. Vehicles exiting driveway will do so with the assistance of the spotter in a safe manner.

Night work traffic control provisions
 - A portable dynamic message sign (PDMS) is required for night work operations on paved roads. The message displayed on the PDMS will alert motorists to the work activities occurring ahead (e.g. flagger operation).



- LEGEND:**
- SIGN MARKER
 - AUTOMATED FLAGGER ASSISTANCE DEVICE (AFAD)
 - TCP CONTROL LOCATION
 - ACCESS (6B-A-BEARSTONE PL-1&2)
 - TYPE 1 BARRICADE
 - TYPE D' TUBULAR DELINEATORS

TRAFFIC CONTROL LAYOUT
AP-6B-A-BEARSTONE PL-1 & 2
BPLP TMEP SPREAD 6B

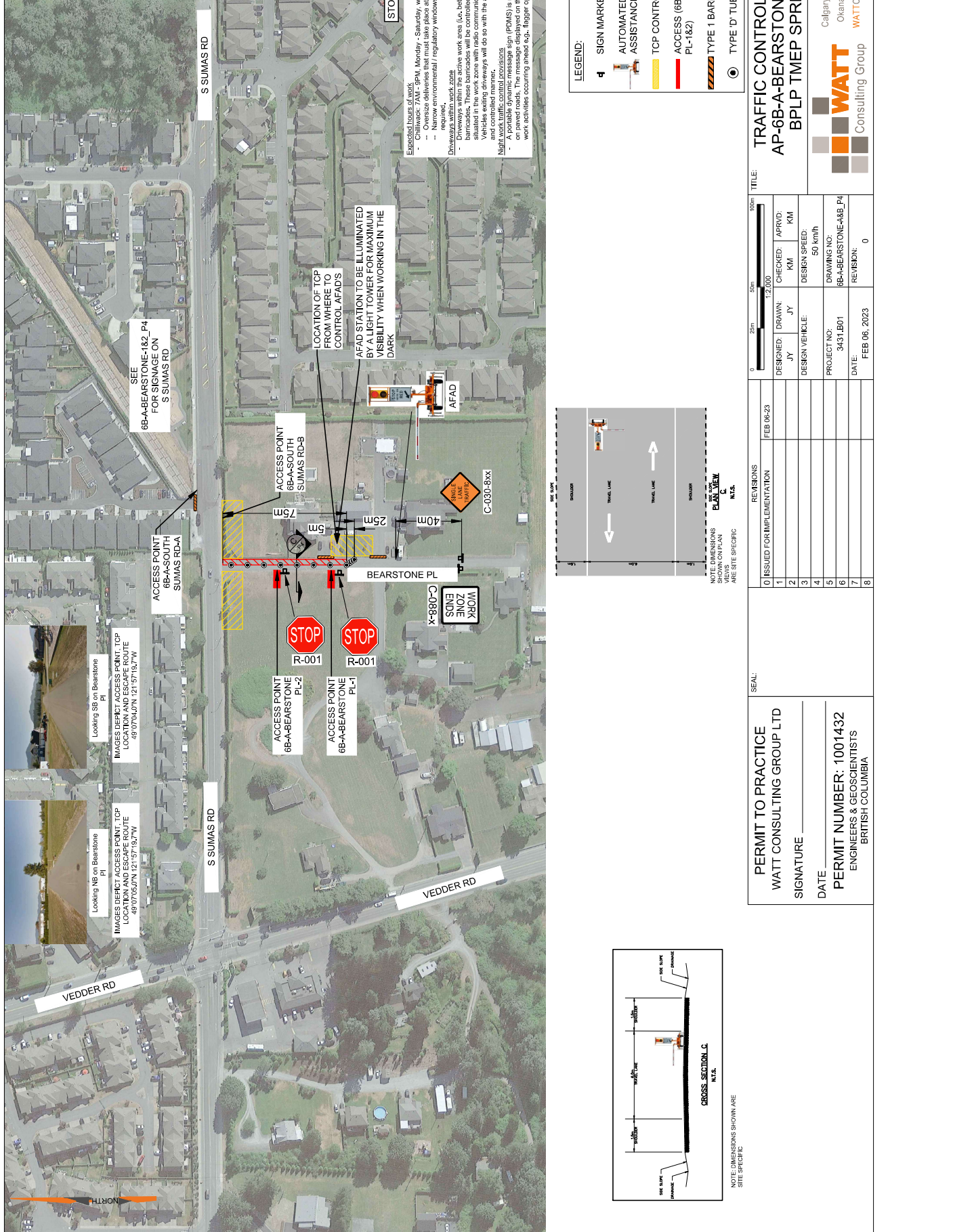
WATT Consulting Group
 Calgary, Edmonton, Lloydminster,
 Okanagan, Vancouver, Victoria
WATTCONSULTINGGROUP.COM

DESIGNED:	DRAWN:	CHECKED:	APPROVED:
JY	JY	KM	KM
DESIGN SPEED: 50 km/h			
DESIGN VEHICLE: 50 km/h			
PROJECT NO:	DRAWING NO:		
3431.B01	6B-A-BEARSTONE-ABLP_P3		
DATE:	REVISION:		
FEB 06, 2023	0		

REVISIONS	ISSUED FOR IMPLEMENTATION	DATE
0	ISSUED FOR IMPLEMENTATION	FEB 06-23
1		
2		
3		
4		
5		
6		
7		
8		

SCALE:	
PERMIT TO PRACTICE	
WATT CONSULTING GROUP LTD	
SIGNATURE	
DATE	
PERMIT NUMBER: 1001432	
ENGINEERS & GEOSCIENTISTS	
BRITISH COLUMBIA	

NOTE: DIMENSIONS SHOWN ARE SITE SPECIFIC			
NOTE: DIMENSIONS SHOWN ARE SITE SPECIFIC			
NOTE: DIMENSIONS SHOWN ARE SITE SPECIFIC			
NOTE: DIMENSIONS SHOWN ARE SITE SPECIFIC			
NOTE: DIMENSIONS SHOWN ARE SITE SPECIFIC			



Expected hours of work:
 - Monday - Saturday, with the following exceptions:
 - Ovesize deliveries that must take place at night
 - Narrow environmental / regulatory windows. A noise exemption permit will be required.
 Days with no work:
 - Days with no work are between AFADs.
 - Days with no work are between AFADs. These barricades will be controlled and maintained by a spotter situated in the work zone with radio communication to the AFAD operators.
 - Vehicles exiting driveways will do so with the assistance of the spotter in a safe manner.
 Night work traffic control provisions:
 - A portable dynamic message sign (PDMS) is required for night work operations on paved roads. The message displayed on the PDMS will alert motorists to the work activities occurring ahead (e.g., flagger operation).

- STORAGE NOT REQUIRED
- SIGN MARKER
 - AUTOMATED FLAGGER ASSISTANCE DEVICE (AFAD)
 - TCP CONTROL LOCATION
 - ACCESS (6B-A-BEARSTONE PL-1&2)
 - TYPE 1 BARRICADE
 - TYPE D' TUBULAR DELINEATORS

VEEDER RD

S SUMAS RD

BEARSTONE PL

ACCESS POINT 6B-A-SOUTH SUMAS RD-A

ACCESS POINT 6B-A-SOUTH SUMAS RD-B

ACCESS POINT 6B-A-BEARSTONE PL-2

ACCESS POINT 6B-A-BEARSTONE PL-1

AFAD

STOP R-001

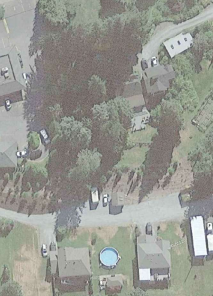
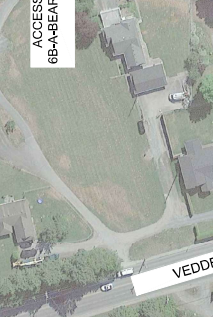
STOP R-001

WORK ZONE ENDS C-088-X

SINGLE BARRICADE C-030-8XX

LOCATION OF TOP CONTROL AFAD'S FROM WHERE TO AFAD STATION TO BE ILLUMINATED BY A LIGHT TOWER FOR MAXIMUM VISIBILITY WHEN WORKING IN THE DARK

SEE 6B-A-BEARSTONE-1&2_P4 FOR SIGNAGE ON S SUMAS RD



REVISIONS	ISSUED FOR IMPLEMENTATION	DATE
0	ISSUED FOR IMPLEMENTATION	FEB 06-23
1		
2		
3		
4		
5		
6		
7		
8		

DESIGNED:	DRAWN:	CHECKED:	APPROVED:
JY	JY	KM	KM
DESIGN VEHICLE:		DESIGN SPEED:	
3431.B01		50 km/h	

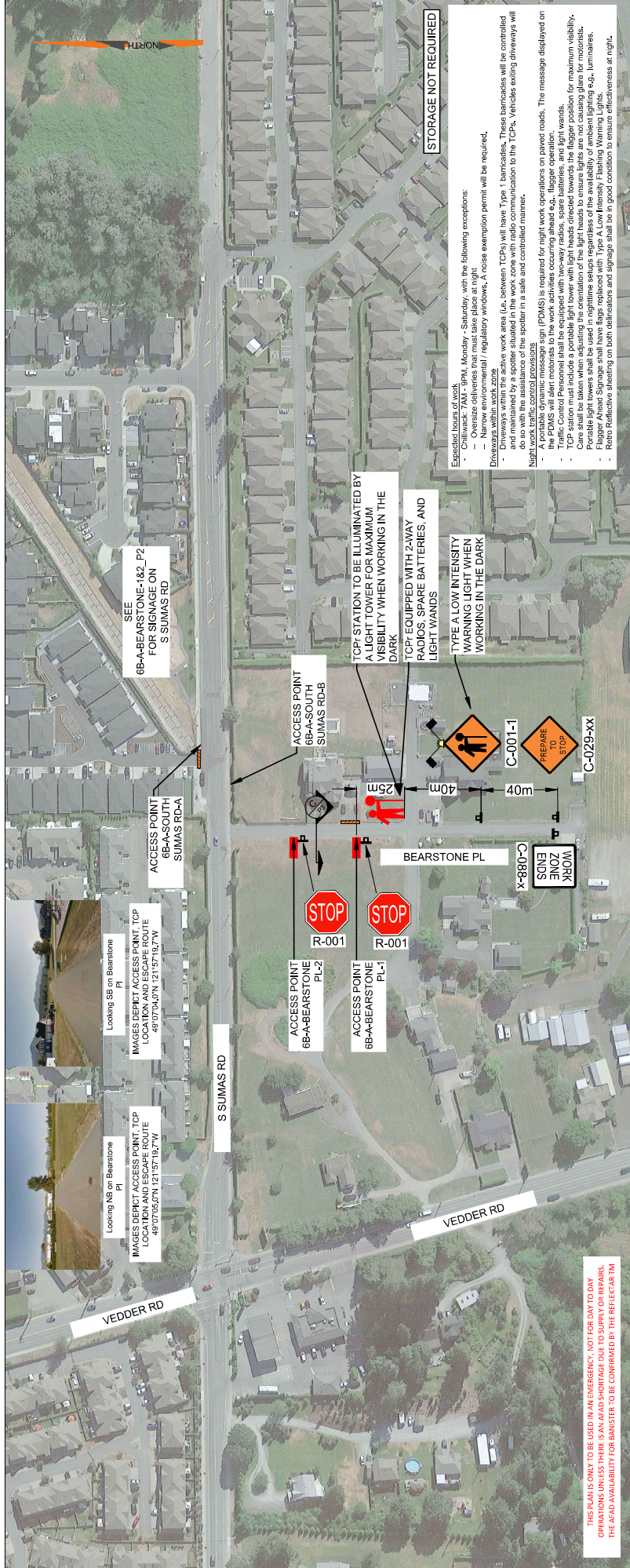
PROJECT NO:	6B-A-BEARSTONE-1&2_P4
DATE:	FEB 06, 2023
REVISION:	0

SEAL:

PERMIT TO PRACTICE
 WATT CONSULTING GROUP LTD
 SIGNATURE _____
 DATE _____
 PERMIT NUMBER: 1001432
 ENGINEERS & GEOSCIENTISTS
 BRITISH COLUMBIA

TITLE:
**TRAFFIC CONTROL LAYOUT
 AP-6B-A-BEARSTONE PL-1 & 2
 BPL-TMEP SPREAD 6B**

Consulting Group
WATT
 Calgary, Edmonton, Lloydminster,
 Okanagan, Vancouver, Victoria
 WATTCONSULTINGGROUP.COM



THIS PLAN IS ONLY TO BE USED IN AN EMERGENCY, NOT FOR DAY TO DAY OPERATIONS UNLESS THERE IS AN AFAD SHORTAGE DUE TO SUPPLY OR REPAIRS. THE AFAD AVAILABILITY FOR BANISTER TO BE CONFIRMED BY THE REFLECTAR TM



NOTE DIMENSIONS SHOWN ARE SITE SPECIFIC

REVISIONS		DESIGNED:	CHECKED:	APPROVED:
0	ISSUED FOR IMPLEMENTATION	FEB 02-23		
1	ISSUED FOR IMPLEMENTATION	FEB 06-23		
2				
3				
4				
5				
6				
7				
8				

PROJECT NO:	3431.B01	DRAWING NO:	6B-A-BEARSTONE-1&2-TCP_P2
DATE:	FEB 02, 2023	REVISION:	1

PROJECT:	WATT CONSULTING GROUP
LOCATION:	Edmonton, Lloydminster, Okanagan, Vancouver, Victoria
WEBSITE:	WATTCONSULTINGGROUP.COM

PERMIT TO PRACTICE
WATT CONSULTING GROUP LTD
 SIGNATURE _____
 DATE _____
PERMIT NUMBER: 1001432
 ENGINEERS & GEOSCIENTISTS
 BRITISH COLUMBIA

TRAFFIC CONTROL LAYOUT
AP 6B-A-BEARSTONE PL-1&2-TCP
BPLP TMEP SPREAD 6B

LEGEND:
 SIGN MARKER
 TCP CONTROL LOCATION
 ACCESS (6B-A-BEARSTONE PL-1&2)
 TYPE 1 BARRICADE

Expected hours of work
 - Chilliwack: 7AM - 5PM, Monday - Saturday, with the following exceptions:
 - Over-size deliveries that must take place at night
 - Driveaways within the active work zone (i.e. between TCPs) will have Type 1 barricades. These barricades will be controlled and maintained by a spotter situated in the work zone with radio communication to the TCPs. Vehicles exiting driveaways will not be subject to a traffic control plan.
 - A portable dynamic message sign (PDMS) is required for night work operations on paved roads. The message displayed on the PDMS will alert motorists to the work activities occurring ahead e.g., flagger operation.
 - Traffic Control Personnel shall be equipped with two-way radios, spare batteries, and light wands.
 - Care shall be taken when adjusting the orientation of the light boards to ensure lights are not causing glare for motorists.
 - Portable light towers shall be used in nighttime setups regardless of the availability of ambient lighting e.g., luminaires.
 - Flagger Ahead Signage shall have flags replaced with Type A Low Intensity Flashing Warning Lights.
 - Retro Reflective Stenciling on both definition and signage shall be in good condition to ensure effectiveness at night.